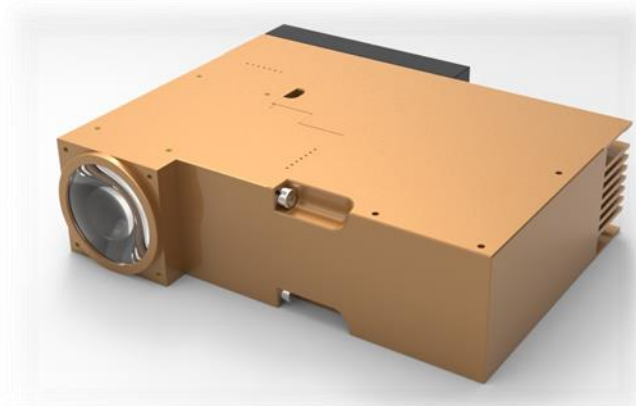


RFFM-1723C Module



Key parameter:

- White light + 785nm laser
- White light Ra>90
- White light CCT=5700±500K
- Luminous flux of white light 2300lm
- Output power of 785nm laser=3500mW
- Back focus length 23.6mm

Application and features:

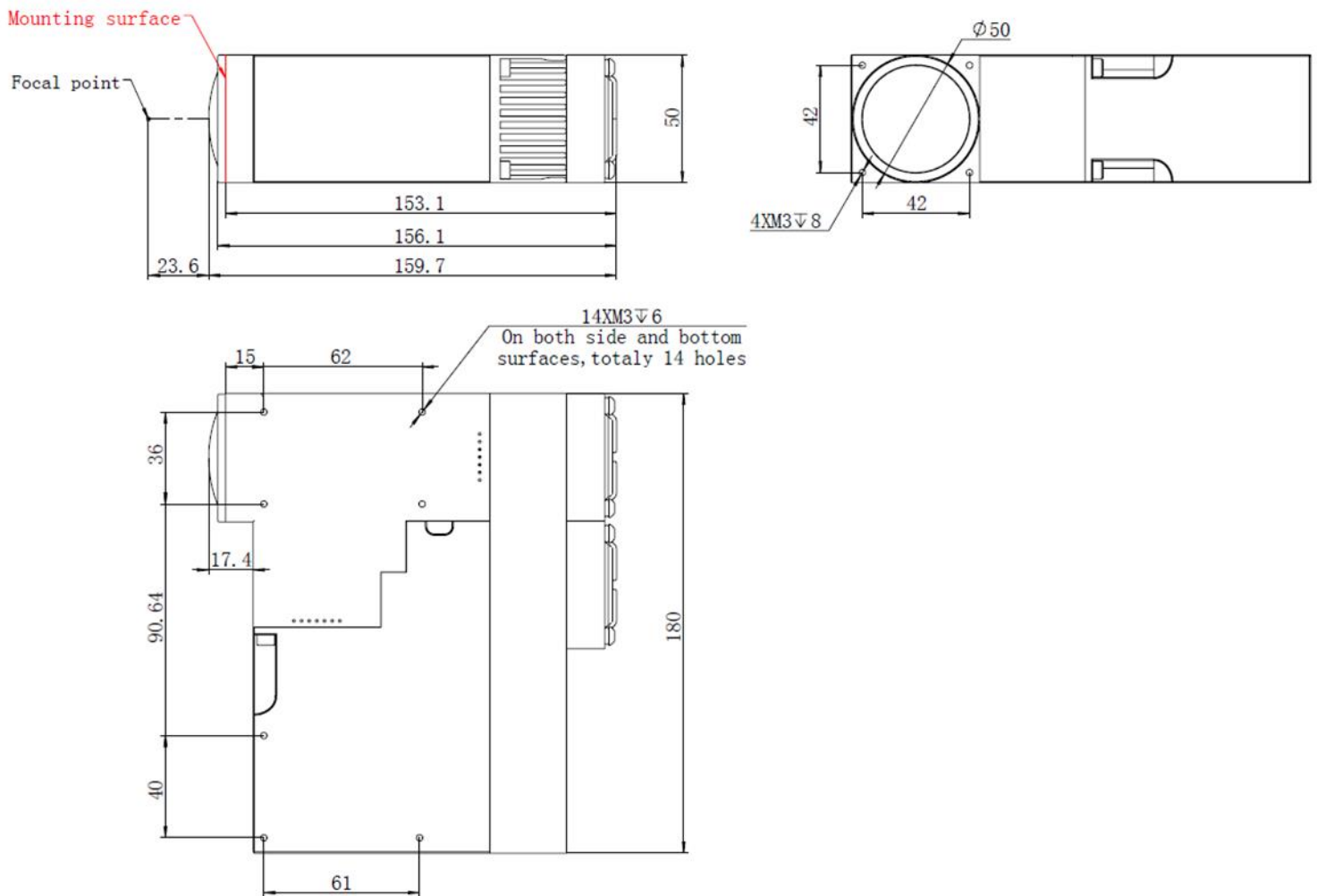
- ICG-NIR fluorescence imaging
- Normal endoscope lighting
- Aspheric glass lens, higher flux output
- RS232 control system

Technical Data

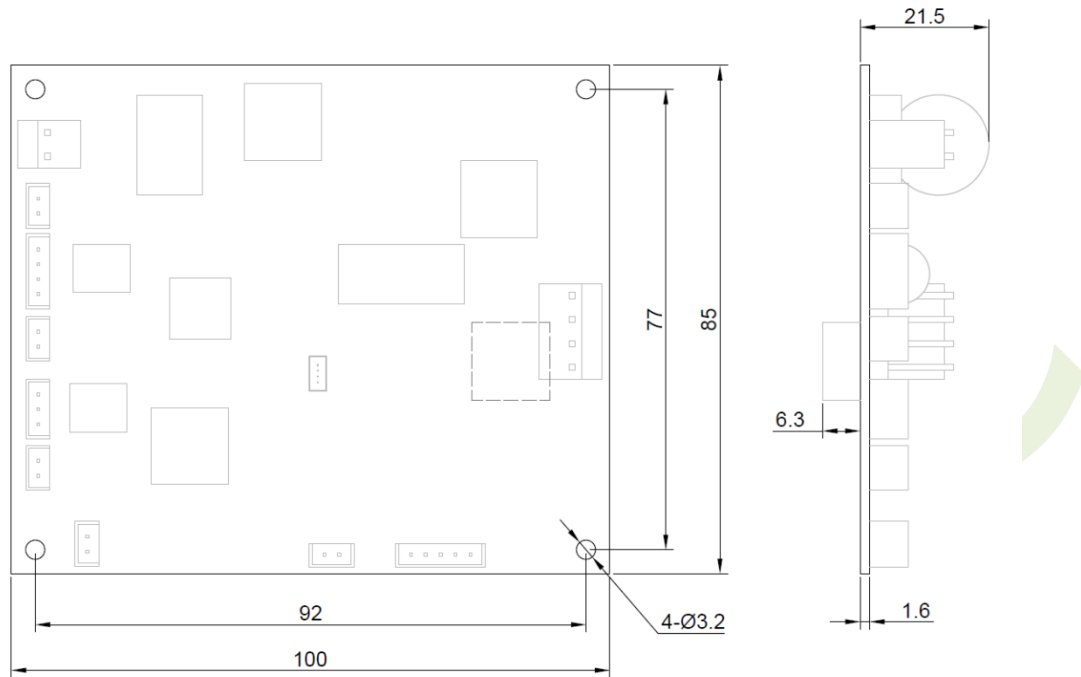
Parameter	Min	Typical	Max	Remarks/Conditions
Optical Data				
Light source		LED+785nm laser		
Peak wavelength		785nm		Laser
CCT	5200 K	5700 K	6200 K	Only white light
Ra	90			Only white light
Luminous flux of white light for Φ5mm light guide		2600 lm		NA=0.62
Laser output		3500mW		Depends on number of laser diode
Back focus length		23.6mm		From the last lens vertex
Electrical Data				
Input voltage 1		DC 12 V		For LED white light
Input power 1		90W		including driver
Dimming of white light	10%		100%	RS232
Dimming of laser	0		100%	RS232
Dimensions and Weight				
Dimensions		As drawings		
Net weight		1460g+240g		Light engine + driver board
Conditions				

Transportation and storage	-20℃		80℃	
Reliability				
Life time of LED		35,000hrs		Tj of LED ≤125℃
Life time of LD		10,000hrs		Tc of LD ≤30℃
Compliance				
IEC 60601-1:2005	Medical electrical equipment - Part 1: General requirements for basic safety and essential performance			

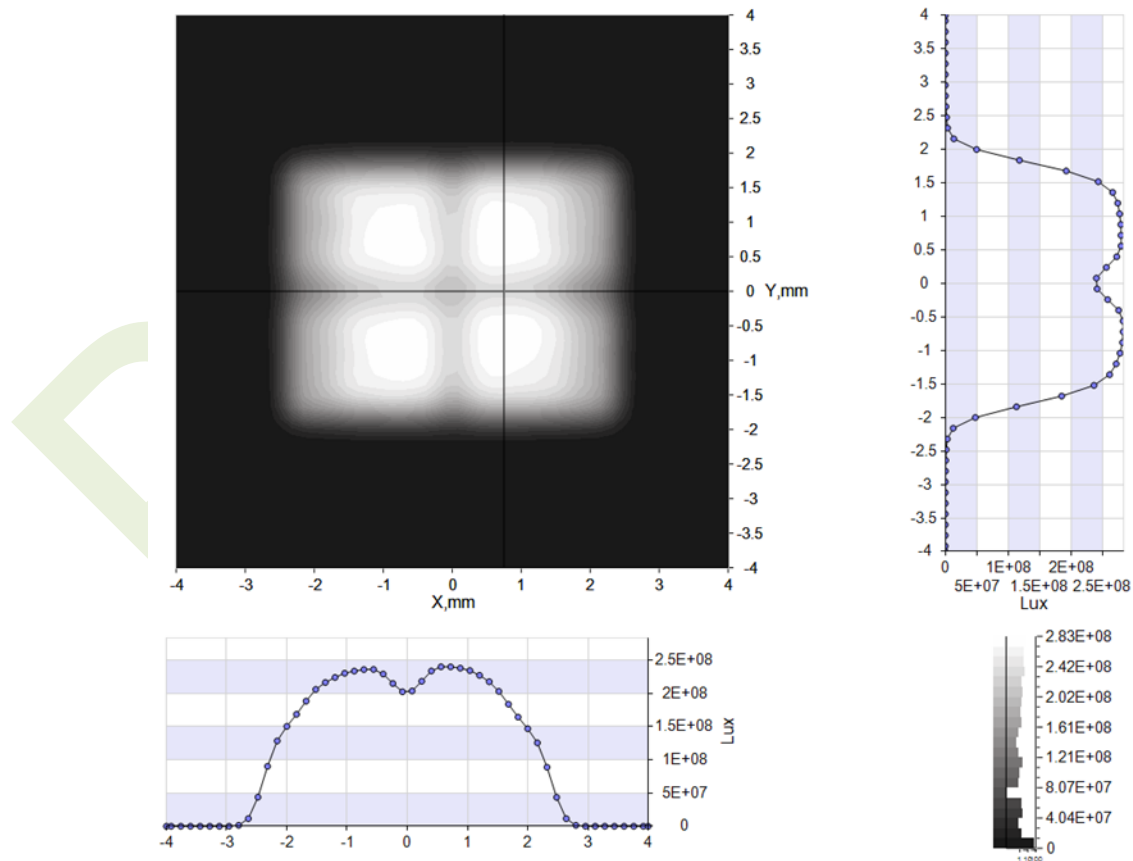
Dimensions of light engine



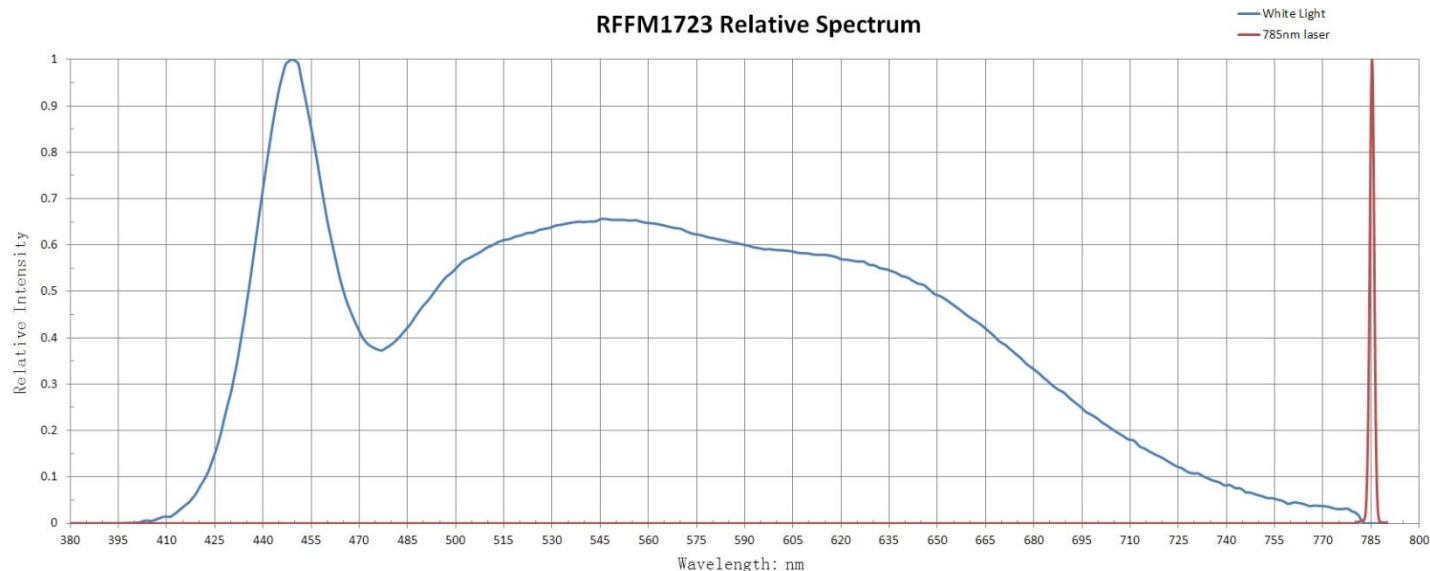
Dimensions of driver boards:



White light-- Illuminance distribution at focal plane



Spectrum



Warning! Keep away from the focus point of light engine, don't watch the light with naked eye!



Rayfine Specialty Lighting Co., Ltd.
Section 201, HCH Building, 93A Gushu 1st Road, Shenzhen, China 518126
Tel: (+86) 755 2908 6158
www.rayfine.cn

The copyright belongs to Rayfine. Rayfine is trade mark of Rayfine specialty lighting. Rayfine could edit this file without notice.