

RFFM-1519 Module



Key parameter:

- CCT=5700±500K
- Ra≥90
- Back focus length 29mm
- Luminous flux 3300lm out of module
- Luminous flux 1250 out of Φ5mm, 1m optical fiber cable

Application Features:

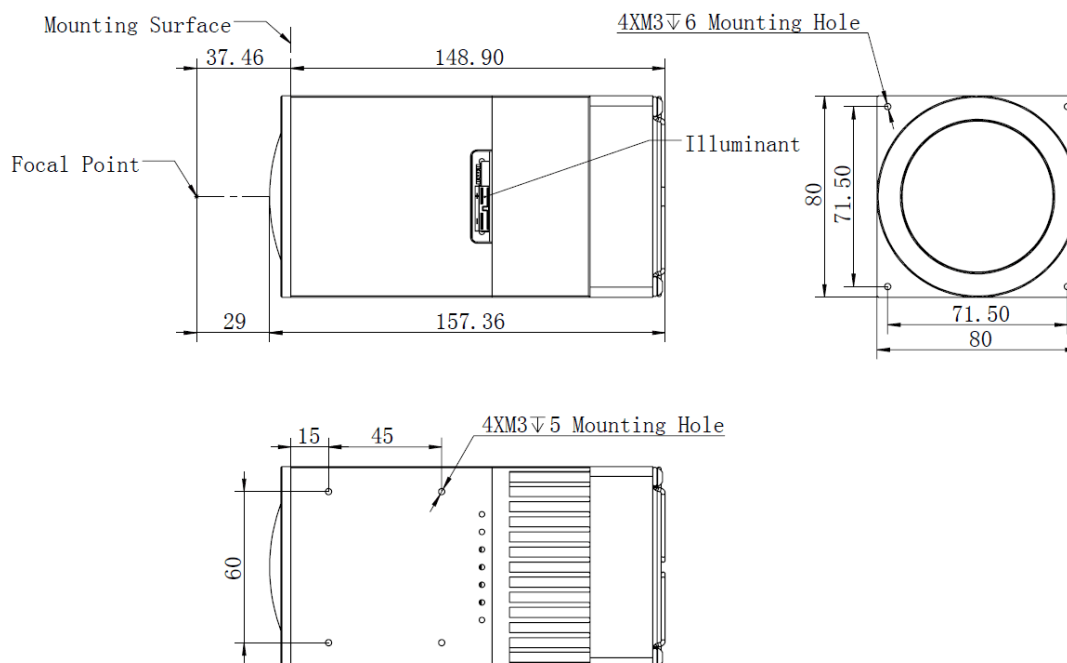
- Aspheric glass lens, super high flux output
- Best choice for laparoscope instead of xenon lamp
- Comply with EMC requirements

Technical Data

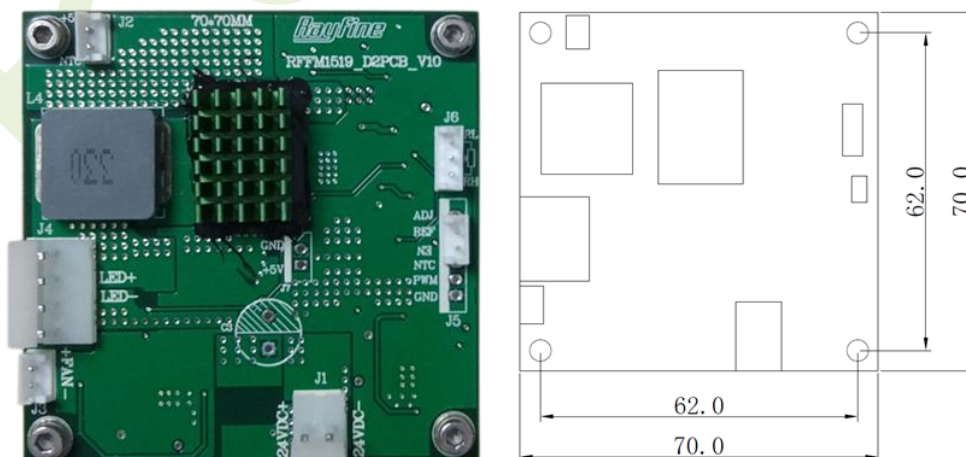
Parameter	Min	Typical	Max	Remarks/Conditions
Optical Data				
Light source		LED		
CCT	5200 K	5700 K	6200 K	After fiber
Ra	90	93		After fiber
Blue/Green ratio		119%		After fiber
Red/Green ratio		44%		After fiber
IR cut-off performance		3.5mW/lm		After fiber
Luminous flux coupled to Optical fiber		3300lm		Tested before fiber
Luminous flux out of Optical fiber		1250lm		Φ5mm, 1m, NA=0.62 optical fiber cable
Back focus length		29mm		From the last lens vertex
Electrical Data				
Input voltage	DC 21.6	DC 24V	DC 26.4V	Can be customized as per customer requirement
Input power	--	80W	--	Excluding power consumption of driver board
Dimming	10%		100%	
Isolation		No need		
Dimensions and Weight				
Dimensions		As drawings		
Net weight		1850g+130g		Light engine + driver board

Conditions				
Heat sink temperature			45°C	
Transportation and storage	-20°C		80°C	
Reliability				
Life time of LED		30,000hrs		T _{J-MAX} of LED is 150°C
Compliance				
IEC 60601-1:2005	Medical electrical equipment - Part 1: General requirements for basic safety and essential performance			

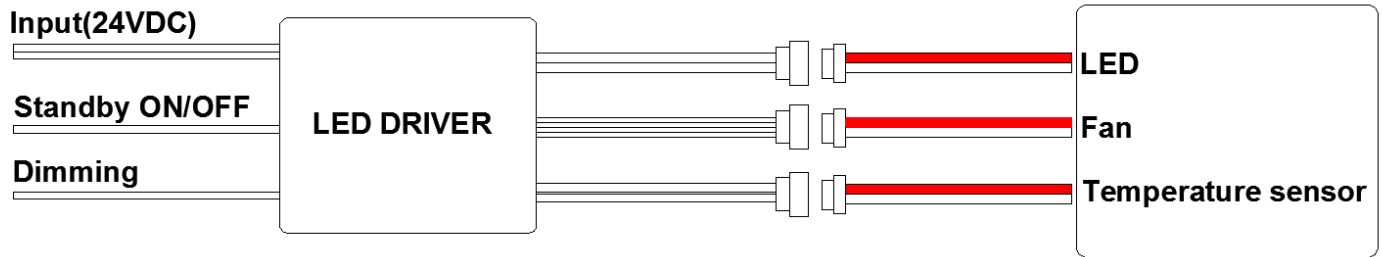
Dimension of light engine



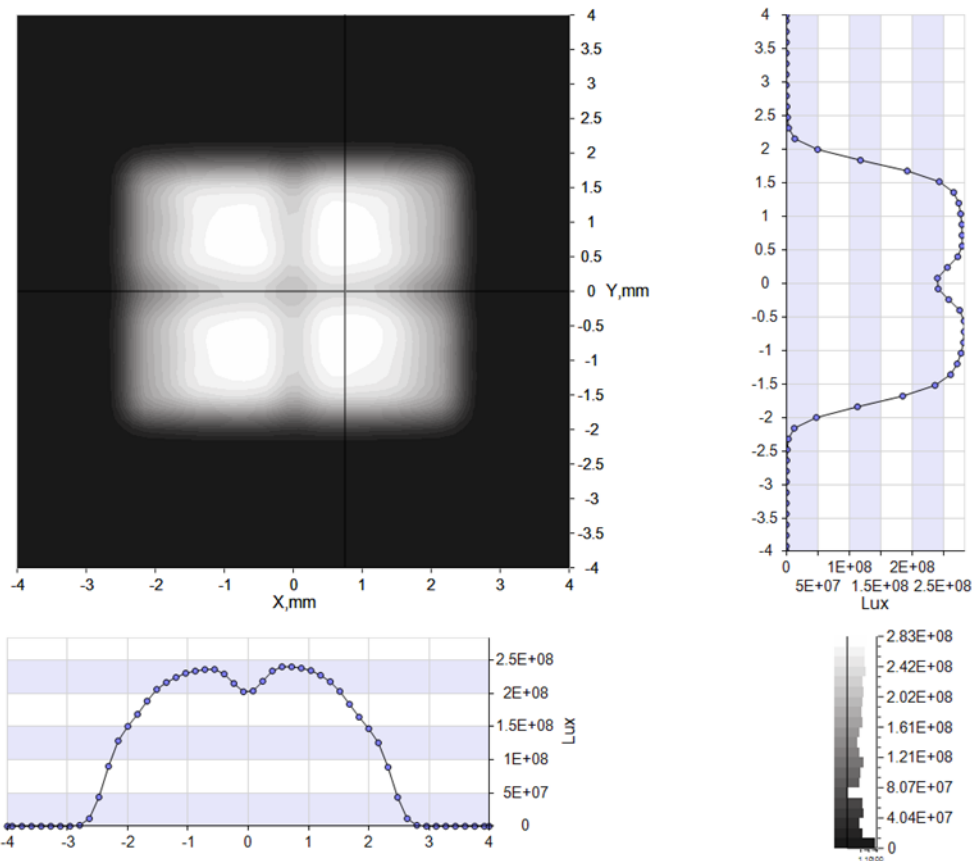
Dimension of driver box(75mm*75mm*31mm)



Wiring of driver board and light engine:



Illuminance distribution on the focus plane



Warning! Keep away from the focus point of light engine, don't watch the light with naked eye!
The light engine must be isolated from live parts!



Rayfine Specialty Lighting Co., Ltd.
Room 911, HSH Building, No. 15 Jinhai Road, BaoAn, Shenzhen, China 518102
Tel: (+86) 755 2908 6158
www.rayfine.cn

The copyright belongs to Rayfine. Rayfine is trade mark of Rayfine specialty lighting. Rayfine could edit this file without notice.