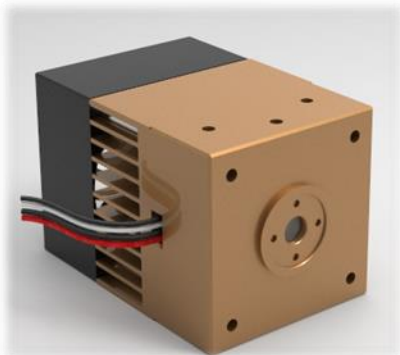


RFFM-1405 Module



Key parameter:

- Ra=70
- CCT=6000±300K
- Back focus length 1.0mm
- 1220 lm output for Φ5mm optical fiber

Application:

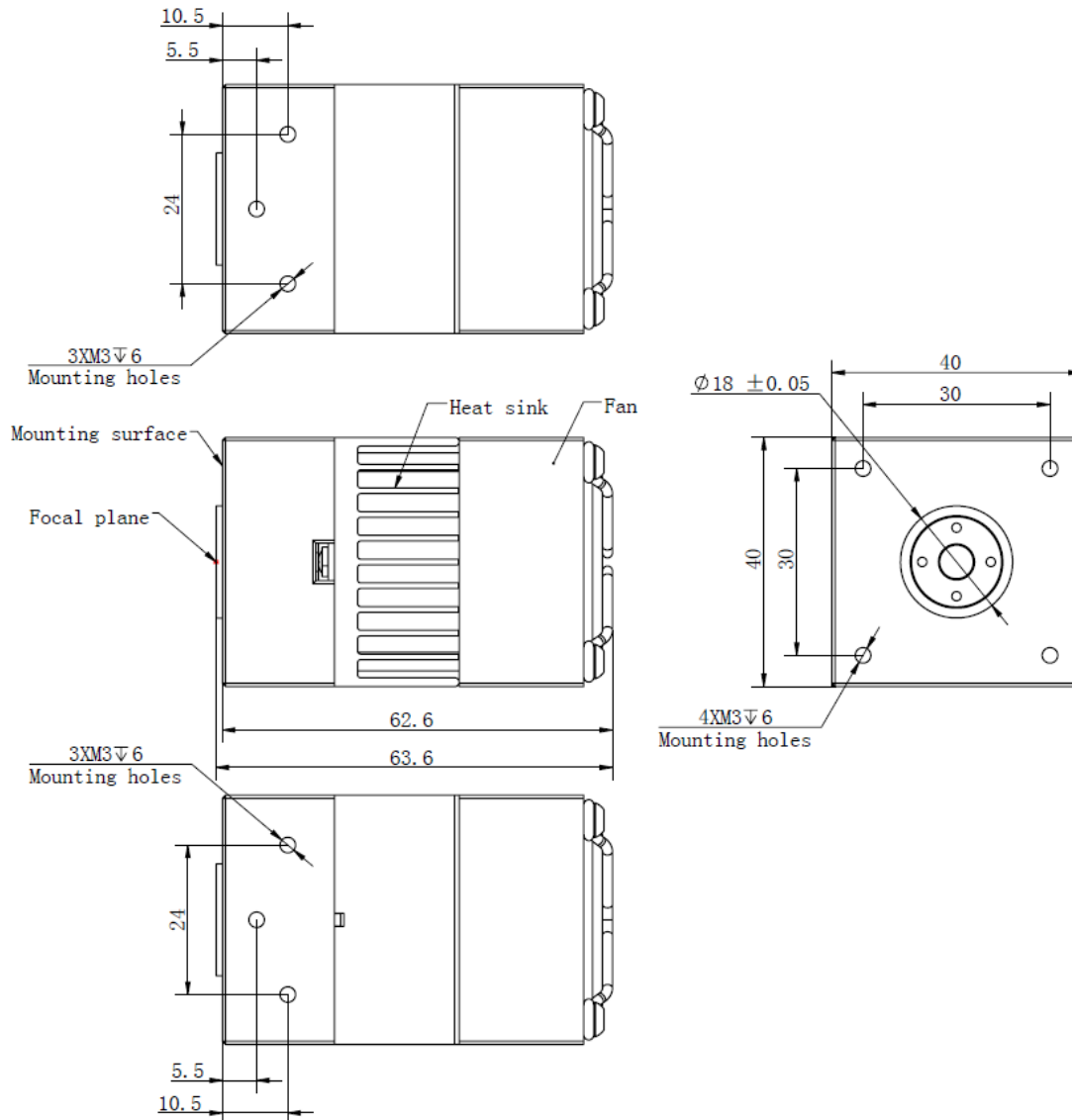
- With aspheric glass lens, much higher flux output
- With driver, comply with EMC requirements
- With Teflon wire, withstand 200℃
- Best choice for ENT or pet endoscope light source

Technical Data

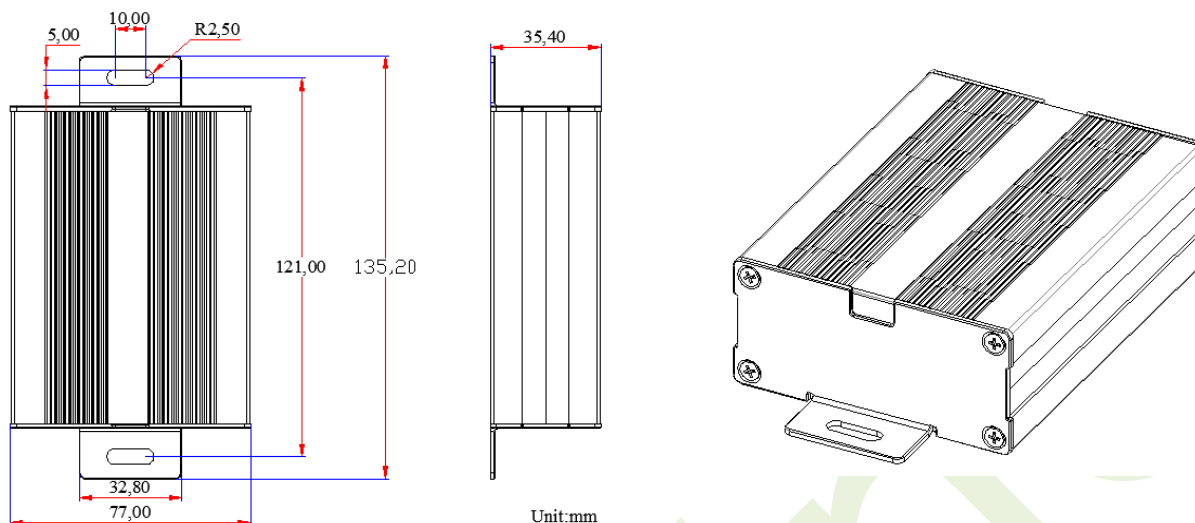
Parameter	Min	Typical	Max	Remarks/Conditions
Optical Data				
Light source		LED		
CCT	5700K	6000K	6300K	
CRI	70			
Blue/Green ratio		134%		After fiber of diameter 4.9mm, length 1m, NA=62
Red/Green ratio		73%		After fiber of diameter 4.9mm, length 1m, NA=62
IR cut-off performance		3.0mW/lm		After fiber of diameter 4.9mm, length 1m, NA=62
Luminous flux output		560lm		After fiber of diameter 4.9mm, length 1m, NA=62
Back focus length		1.0mm		From the last lens vertex
Electrical Data				
Input voltage	10.8VDC	12VDC	13.2VDC	To be customized as per customer requirements
Power consumption		30W		Including the power consumption of driver
PWM/Linear Dimming	16%		100%	PWM dimming, 1% each step, 91 steps, to be customized as per customer requirements
Dimensions and Weight				
Dimensions		As drawings		Refer to the below drawings
Net weight		160g+580g		Light engine + driver case

Conditions				
Heat sink temperature			45°C	
Transportation and storage	-20°C		80°C	
Compliance				
IEC 60601-1:2005	Medical electrical equipment - Part 1: General requirements for basic safety and essential performance			
IEC 60601-1-2: 2007	Medical electrical equipment - Part 1-2: General requirements for basic safety and essential performance - Collateral standard: Electromagnetic compatibility - Requirements and tests			

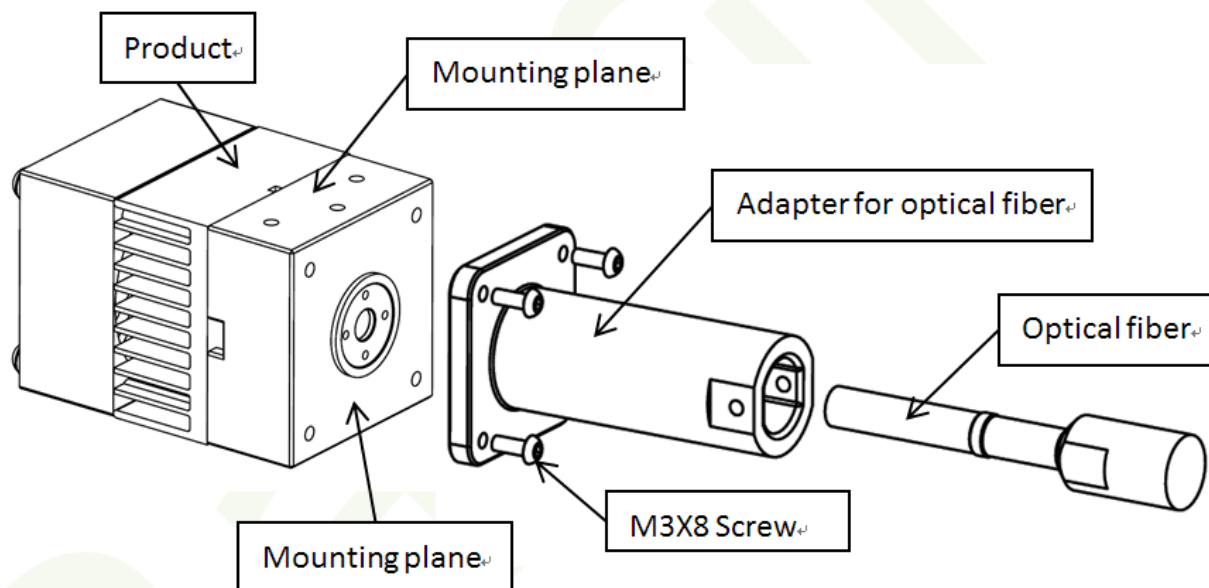
Dimensions of light engine



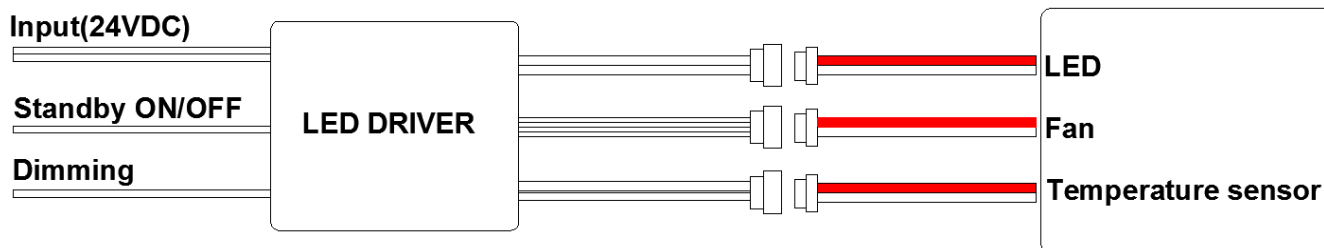
Dimensions of driver case



Assembly Illustration

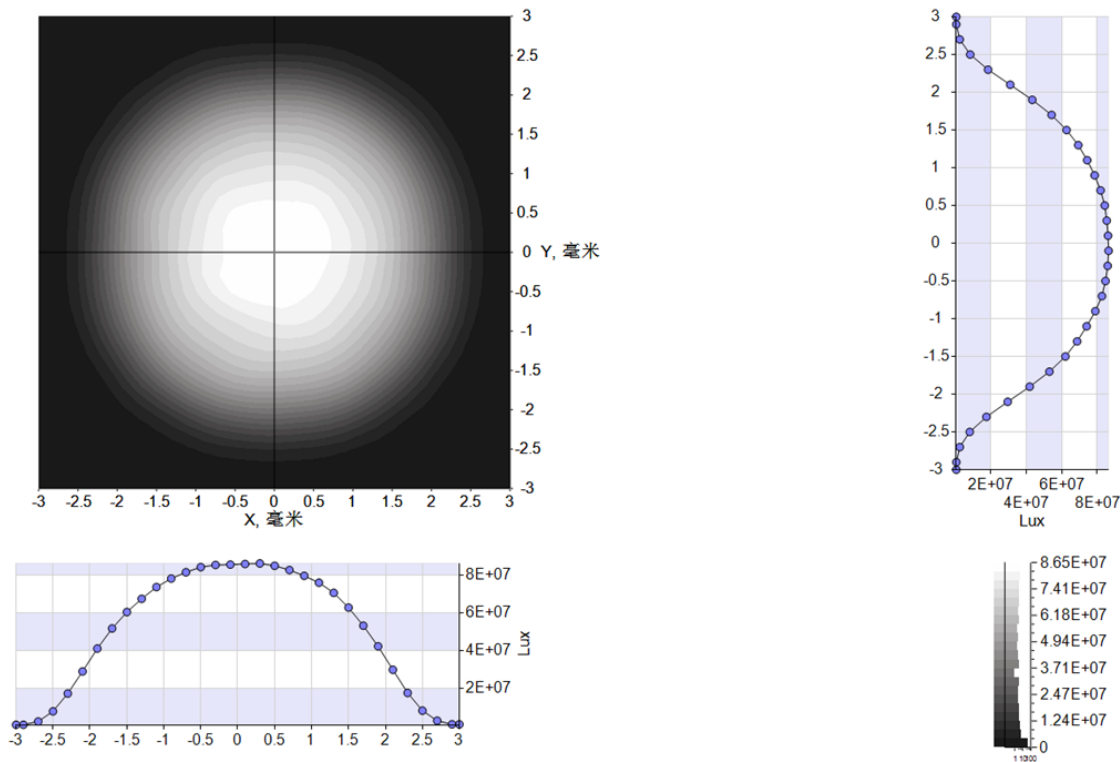


Wiring of driver and light engine



Warning! Please don't connect connectors with power!

Illuminance distribution on the focus plane



Warning! Keep away from the focus point of light engine, don't watch the light with naked eye!



Rayfine Specialty Lighting Co., Ltd.
Room 911, HSH Building, No. 15 Jinhai Road, BaoAn, Shenzhen, China 518102
Tel: (+86) 755 2908 6158
www.rayfine.cn

The copyright belongs to Rayfine. Rayfine is trade mark of Rayfine specialty lighting. Rayfine could edit this file without notice.